



Rabbit anti Raf-1 (pS259) Polyclonal Antibody

Alternative Name(s): v-raf-1 murine leukemia viral oncogene homolog 1; c-Raf; RAF-1 NS5; CRAF; Raf-1; CMD1NN

Order Information

- **Description:** Raf-1 (pS259)
- **Catalogue:** 500-12014
- **Lot:** See label
- **Size:** 100ug/200ul
- **Host:** Rabbit
- **Clone:** nan
- **Application:** IHC(P), WB, IP
- **Reactivity:** Hu, Ms

ANTIGEN PREPARATION

A synthetic peptide RST-[³⁵S]-TPN corresponding to the epitope --at a phosphorylation site Ser259 of human Raf-1 protein. This sequence is identical within human and mouse.

BACKGROUND

Raf-1 is the cellular homolog of viral raf gene (v-raf). It is a cytoplasmic protein with intrinsic serine/threonine activity. It is broadly expressed in nearly all cell lines tested to date and is the cellular homolog of v-Raf, the product of the transforming gene of the 3611 strain of murine sarcoma virus. The unregulated kinase activity of the v-Raf protein has been associated with transformation and mitogenesis while the activity of Raf-1 is normally suppressed by a regulatory N-terminal domain. Raf-1 is activated in response to activation of a variety of tyrosine kinase receptors as well as in response to pp60v-Src expression. There is accumulating evidence that Ras p21 may play a role in activation of Raf-1 and may play the role of the messenger from membrane tyrosine kinases to Raf-1.

PURIFICATION

The Rabbit IgG is purified by site-modified Epitope Affinity Purification.

FORMULATION

This affinity purified antibody is supplied in sterile Tris-buffered saline (pH7.2) containing antibody stabilizer

SPECIFICITY

This antibody recognizes Raf-1 with the phosphorylation site Ser259. It does not cross-react with non-phosphospecific peptide.

STORAGE

The antibodies are stable for 24 months from date of receipt when stored at -20oC to -70oC. The antibodies can be stored at 2oC-8oC for three month without detectable loss of activity. Avoid repeated freezing-thawing cycles.

APPLICATIONS/SUGGESTED WORKING DILUTIONS*

- Western Blot: 0.1-1 µg/ml
- ELISA: 0.01-0.1 µg/ml
- Immunoprecipitation: 2-5 µg/ml
- IHC: 2-10 µg/ml
- Flow cytometry: Not tested
- Molecular Weight: 75.0
- Positive Control: Kidney Tissue
- Cellular Location: Cell Membrane

*Optimal dilutions should be determined by researchers for the specific applications.

FOR RESEARCH USE ONLY.

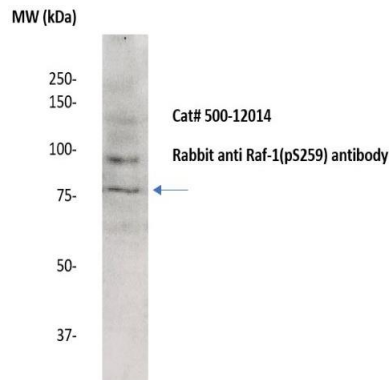
AbboMax, Inc 2528 Qume Drive, Suite 8, San Jose, California 95131, USA
1 408-573-1898 (Tel). 1 408-573-1858 (Fax). www.abbomax.com info@abbomax.com



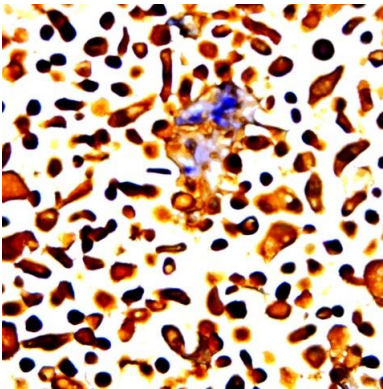
FOR RESEARCH USE ONLY.

AbboMax, Inc 2528 Qume Drive, Suite 8, San Jose, California 95131, USA
1 408-573-1898 (Tel). 1 408-573-1858 (Fax). www.abbomax.com info@abbomax.com

DATA ATTACHMENTS



Western Blot: The whole lysate derived from HeLa (20 ug/lane) immunoblotted by Rabbit anti – Raf-1(pS259) (Cat# 500-12014) at 1:500. Observed a major immunoreactive band at molecular weight ~75kDa.



Immunohistochemistry: The whole cell pallet HeLa (FFPE) stained with Rabbit anti-Raf-1(pS259) (Cat# 500-12014) at 1:200 for 10 min @ RT. Staining of formalin-fixed tissue requires boiling tissue section in 10 mM Citrate Buffer, pH 6.0 for 10 min followed by cooling at RT for 20 min.

REFERENCES

FOR RESEARCH USE ONLY.